



**T**he Health, Healthcare and Insurance survey (ESPS) carried out biannually is the major health survey in France based on a national representative panel. IRDES participates in the Survey on Health Ageing and Retirement in Europe (SHARE) in collaboration with the French National Institute for Statistics and Economic Studies (INSEE).

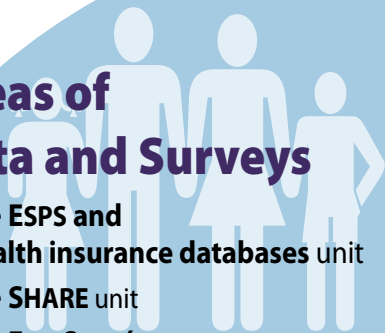
IRDES also develops and conducts periodic and targeted surveys on health status, healthcare utilisation, health insurance, healthcare supply...

Partnership agreements also enable IRDES to exploit surveys conducted by other organizations (INSEE, IMS-Health...).

Furthermore, IRDES produces and updates yearly Eco-Santé databases (OECD, Québec, France, Régions & Departements), which provide an easy access to the major health and social statistics.

## Areas of Data and Surveys

- The **ESPS and Health insurance databases** unit
- The **SHARE** unit
- The **Eco-Santé** unit
- The **Data management and Archiving** unit



RDES conducts research on a wide variety of issues regarding the supply and demand of healthcare both from a macro and a micro-economic perspective:

- evaluation of reforms;
- healthcare organisation and financing;
- regulation of health professionals;
- health status and its determinants;
- inequalities in health and healthcare use;
- health-work relations;
- healthcare costs and quality;
- pharmaceuticals;
- statutory and complementary health insurances;
- health geography;
- comparative analysis of health systems.

These themes are aggregated into four main areas of research.

## Areas of research

- **Area I. Ambulatory care**  
medical practices and their organisation
- **Area II. Hospital care and alternatives to hospitalisation**  
financing, quality, efficiency and access
- **Area III. Health status**  
inequalities and determinants
- **Area IV. Healthcare systems**  
financing, insurance and regulation.

**I**RDES has various means to disseminate health information and research findings to a wide audience:

- on its website **www.irdes.fr**, a large number of documents available online: *Health Economics Letter*, (reports, working papers, monthly data and graphics, press releases and reviews...;
- on **www.ecosante.fr**, more than 60.000 official statistical series on health, healthcare and social system in France, in regions & departments;
- a **documentation service** specialised in health economics but it also has references in subsidiary fields (demography, epidemiology, medicine...), open to the public;
- a **free monthly newsletter** sent by email upon subscription.



## Research support services

- Documentation
- Diffusion

# Our partnerships

**R**esearchers at IRDES have privileged relationships with numerous French partners in institutional, scientific and medical fields:

- the National Health Insurance Fund for Salaried Workers (CNAMTS) and the French Mutuality;
- the Ministry of Health;
- the National Center for Scientific Research (CNRS), the National Institute for Health and Medical Research (INSERM), the National Institute for Statistics and Economic Studies (INSEE), the National Institute of Demographic Studies (INED), the National Institute for Public Health Surveillance (INVS)...;
- the French Economists Association (CES);
- the National Observatory on the Demography of Health Professions (ONDPS)...

IRDES also participates in a number of projects and collaborates, among others, with:

- the International Health Policy Monitor (Bertelsmann Foundation);
- the European Health Policy Research Network;
- the Franco-Quebec Health Observatory (OFQSS).



# Budget & Staff information

**T**he Institute for Research and Information in Health Economics, is a non-profit association established under the law of 1901.

It is funded mainly by grants from Health Insurance Funds (the National Fund for Salaried Workers, the National Fund for Self-employed Workers and the Agricultural Mutual Fund) and the French Mutuality. The additional funding comes from contracts obtained through public invitations to tender.

IRDES employs about fifty people: a multi-disciplinary team of researchers (economists, physicians, statisticians...), computer scientists and librarians.

## Contact IRDES

**R**each us online:

**[www.irdes.fr](http://www.irdes.fr)**

**O**ur address and phone number:

**IRDES**

10, rue Vauvenargues

75018 Paris - FRANCE

Tel: + 33 1 53 93 43 00

Fax: + 33 1 53 93 43 50