A photograph of a person standing in a hospital hallway, looking out a window. The hallway has wooden walls and a polished floor. The person is wearing a dark jacket and pants. The window shows greenery outside.

# Therapeutic landscapes: elements of differentiation of care supply?

## The example of Alzheimer's specialized units in Upper Normandy

**Mélanie Petit**  
**University of Rouen, France**

The 15<sup>th</sup> Emerging New Researchers in the Geography of Health and Impairment Conference

10-11 June 2010 -Paris – France

<http://www.irdes.fr/Enrghi2010>

[enrghi2010@irdes.fr](mailto:enrghi2010@irdes.fr)

## Issues

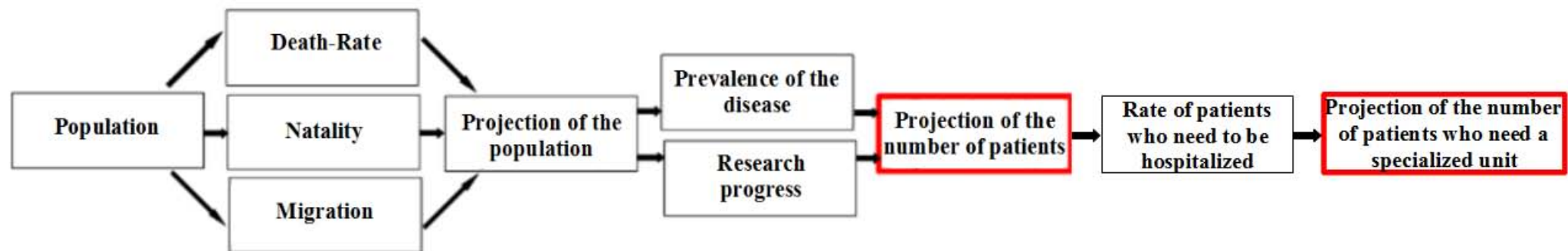
- Understand why care places of neurodegenerative diseases do not look alike.
- Define a first typology of these care places
- Contribute to the well-being of patients

## Methods

- Theoretical and conceptual approaches
- Combination of methods both quantitative and qualitative at various scales : first at the regional scale, second at the scale of care settings.

# Differentiation of care places at the Upper Normandy scale (1)

- A model to estimate the number of patients who would need to be placed in a specialized unit



For given year and space

Source: Gadreau and Jaffre, 1998

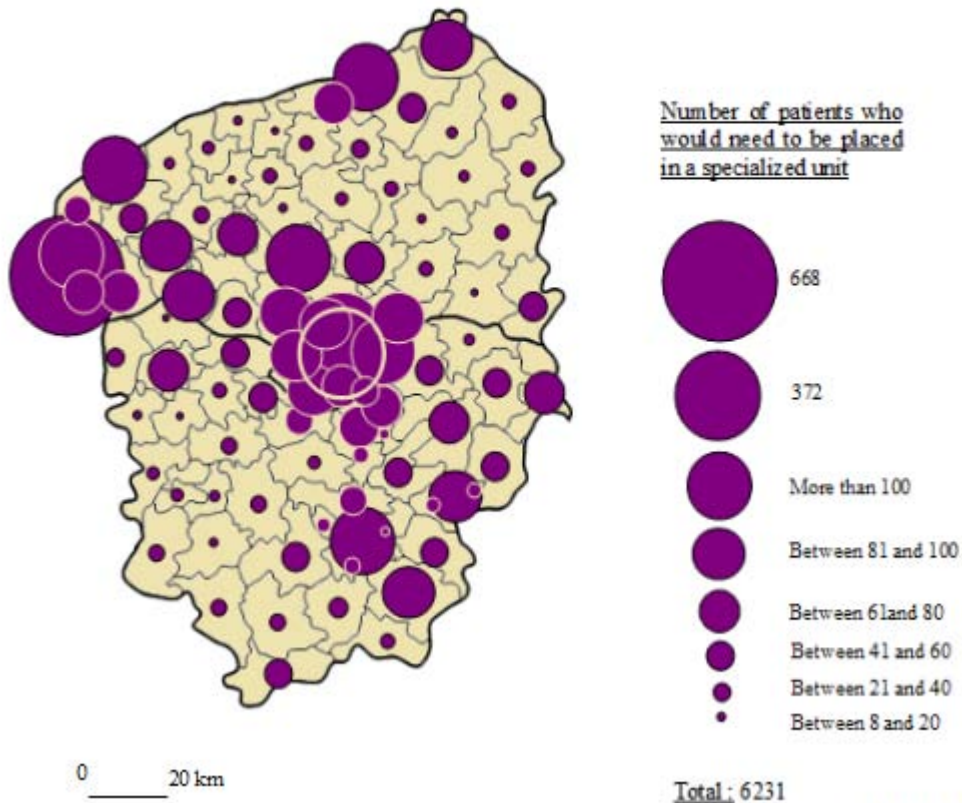
Author: Petit

# Differentiation of care places at the Upper Normandy scale (2)

- Inadequacy between supply and demand

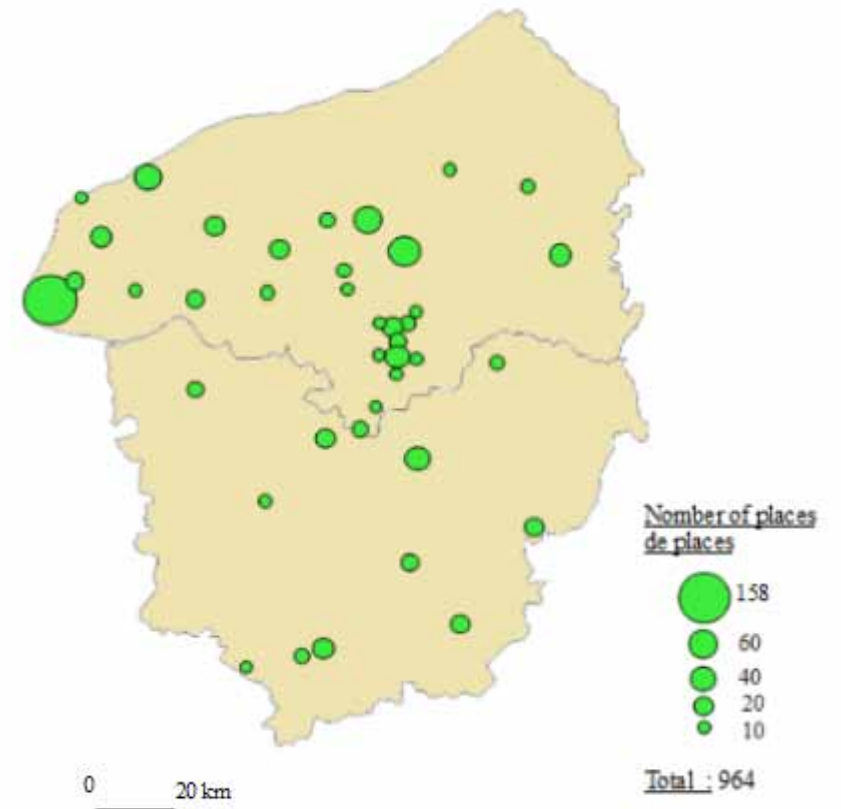
## The demand

At local scale for Alzheimer's patients over 60 years in 2010



## The supply

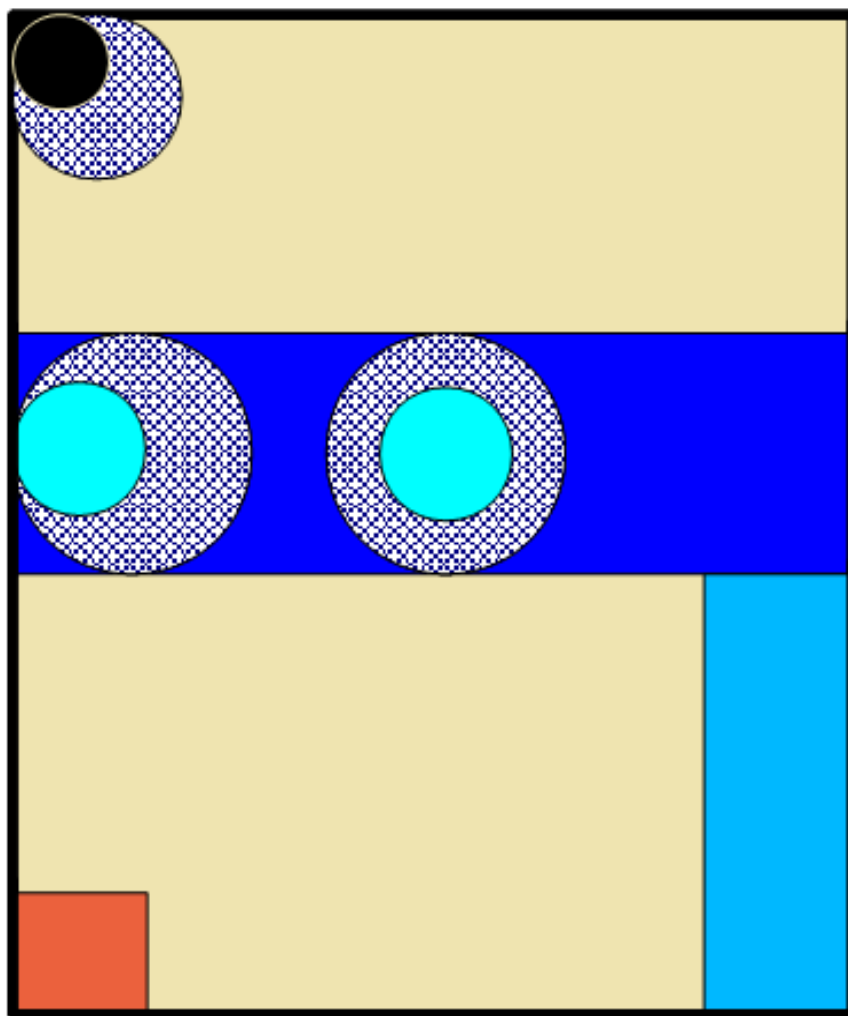
For Alzheimer's patients over 60 years in 2010






# Differentiation of care places at the Upper Normandy scale (3)

## ● A first typology





### Legend


Areas where supply and demand are nearly in balance.

 Balanced space


Areas where there is a lack of supply despite a strong demand


 The Seine Valley: about 50% of needs covered

 Border area of the Ile de France: about 30% of needs covered

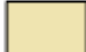
 Major cities: about 25% of needs covered

Area where there is no supply and a strong demand

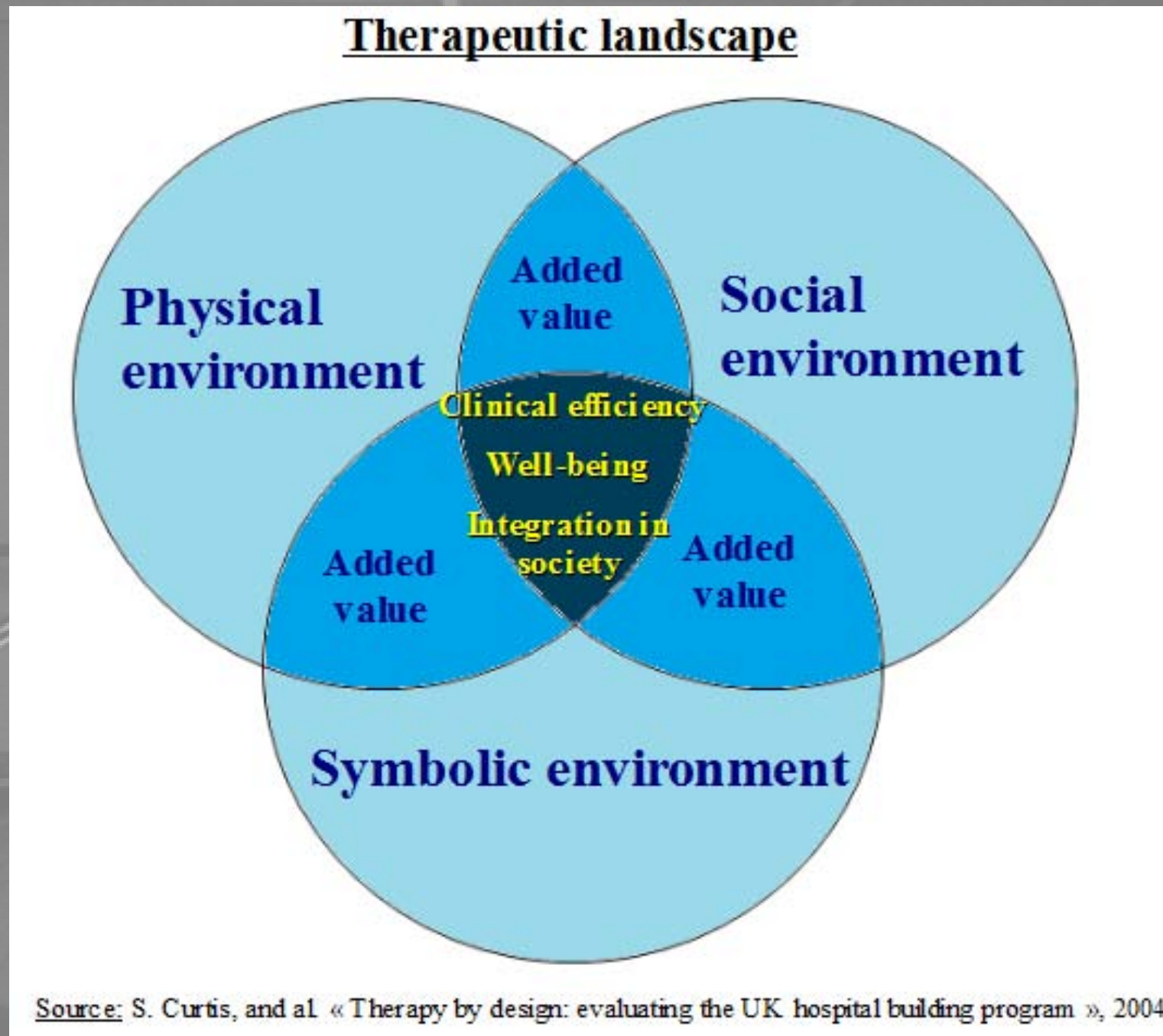
 The areas close to the periphery of large conurbations: 0% of needs covered

 Dieppe / Le Tréport : 0% of needs covered

Areas where there is no supply and a poor demand

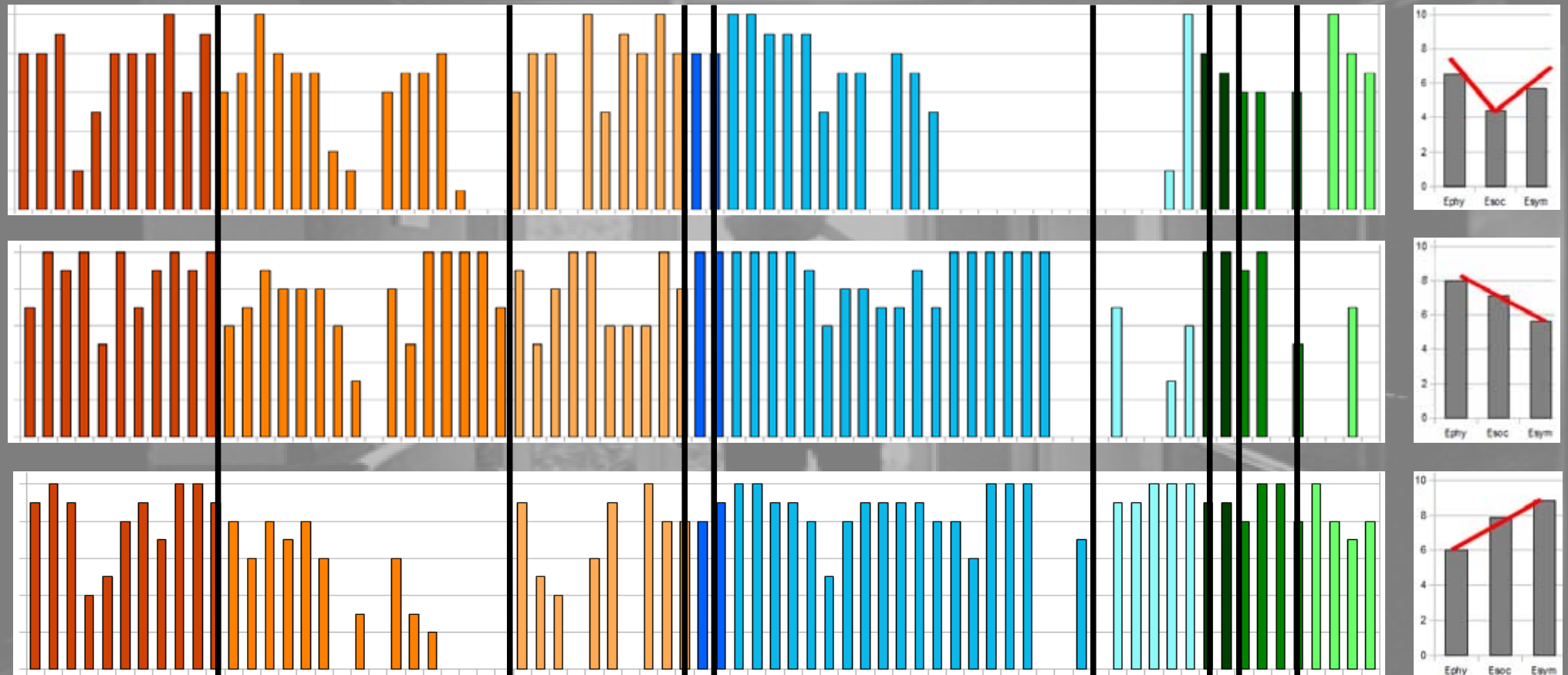
 Rural spaces : 0% of needs covered

# Differentiation of care places at the scale of Alzheimer's specialized units (1)



# Differentiation of care places at the scale of Alzheimer's specialized units (2)

## ● Results for three examples



### Physical environment

- Clinical efficiency
- Promotion of well-being
- Integration to society

### Social environment

- Clinical efficiency
- Promotion of well-being
- Integration to society

### Symbolic environment

- Clinical efficiency
- Promotion of well-being
- Integration to society

## ● Extract of the framework

### Analytical criteria

#### Physical environment

#### Clinical efficiency

##### \* For patients

It's easy to find one's way

Patients can move without restriction

The patients can move without risk

There is a good organisation of the walking

##### \* For staff

The organisation of the rooms reduces the distances

The unit is well equipped

The unit is easy to clean

Staff can easily control the ambient effects

The staff has received special training in the management of Alzheimer's disease

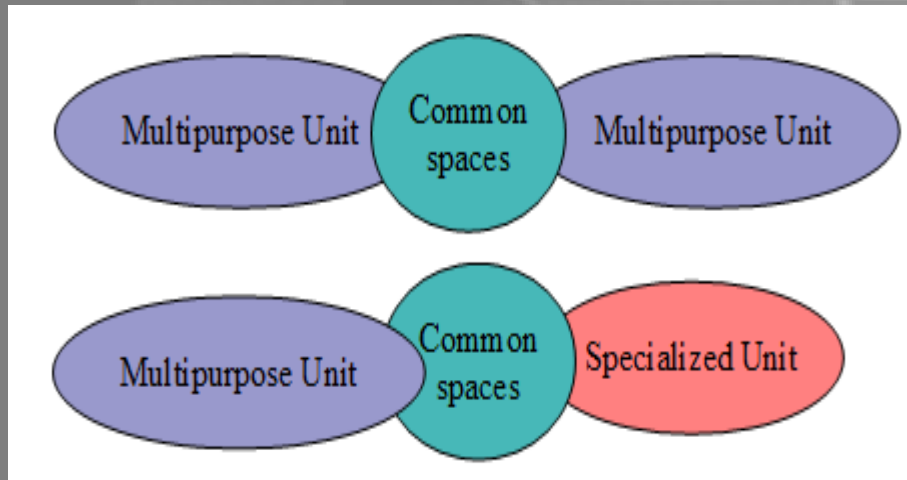
The staff rate is good

The procedure for emergency evacuation to a hospital is clearly defined

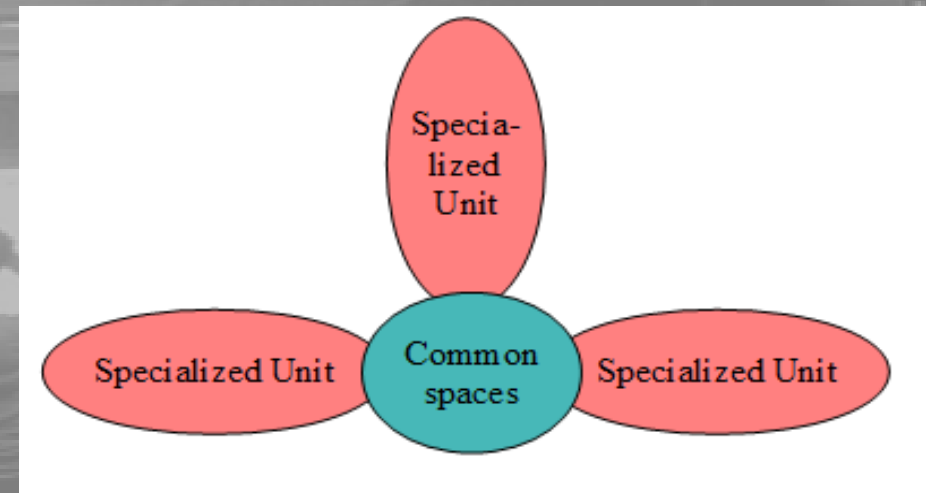


# Differentiation of care places at the scale of Alzheimer's specialized units (3)

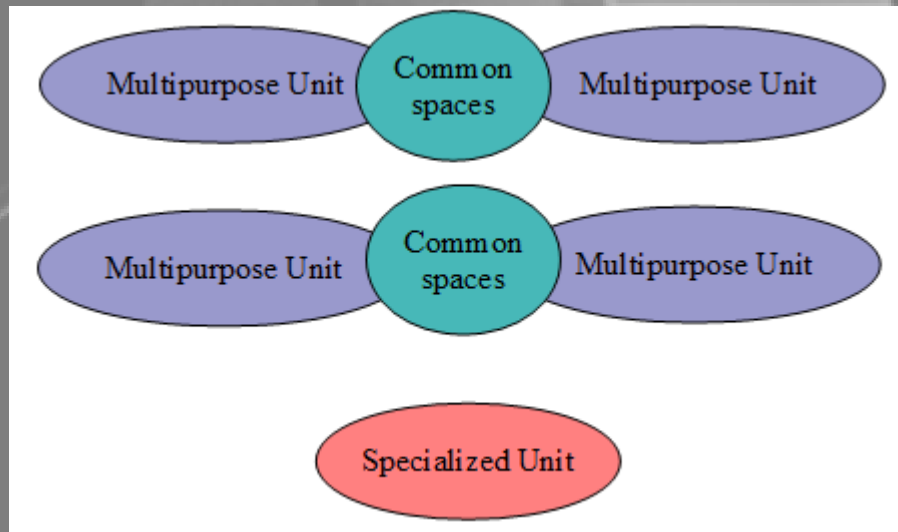
- **Differents localisations within the health infrastructures**



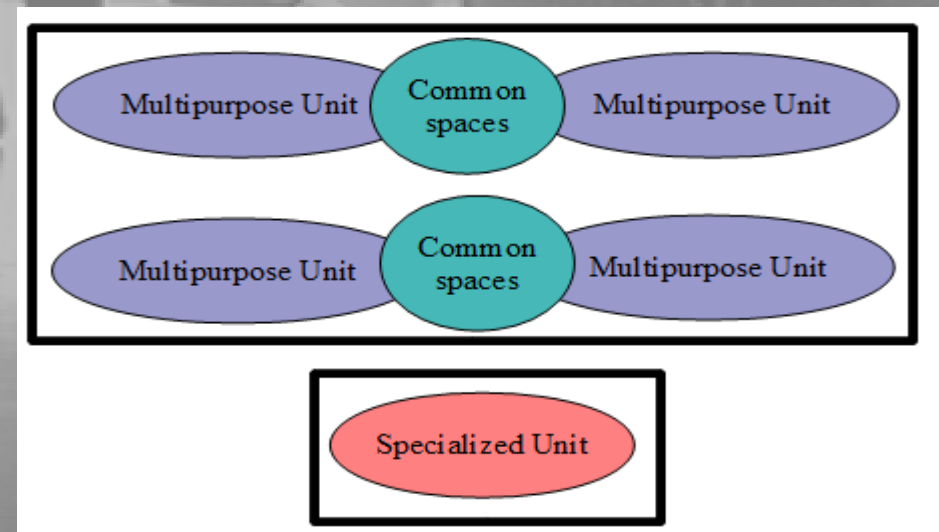
Specialized unit together with multipurpose units



Specialized units together



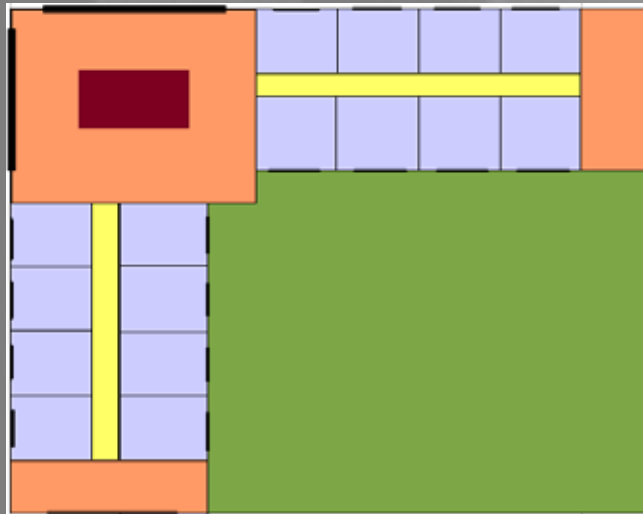
Isolated specialized unit



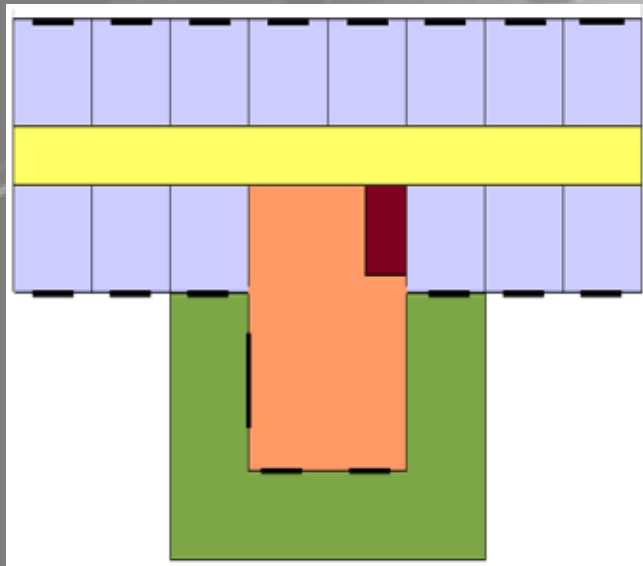
Specialized unit elsewhere

# Differentiation of care places at the scale of Alzheimer's specialized units (4)

## ● Different models of plan








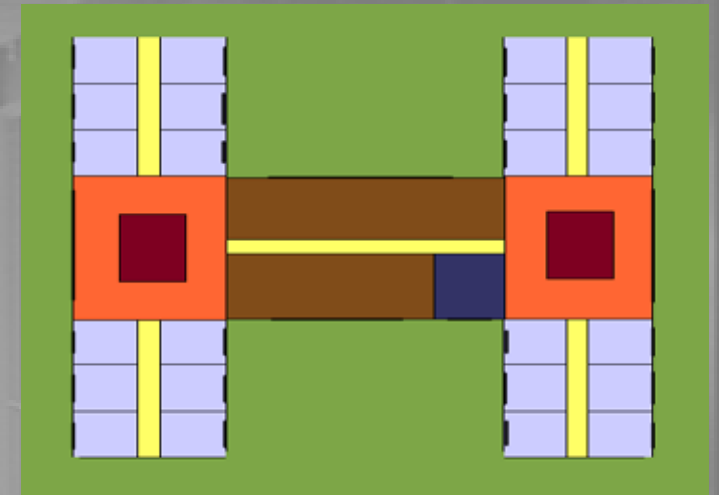
« L »



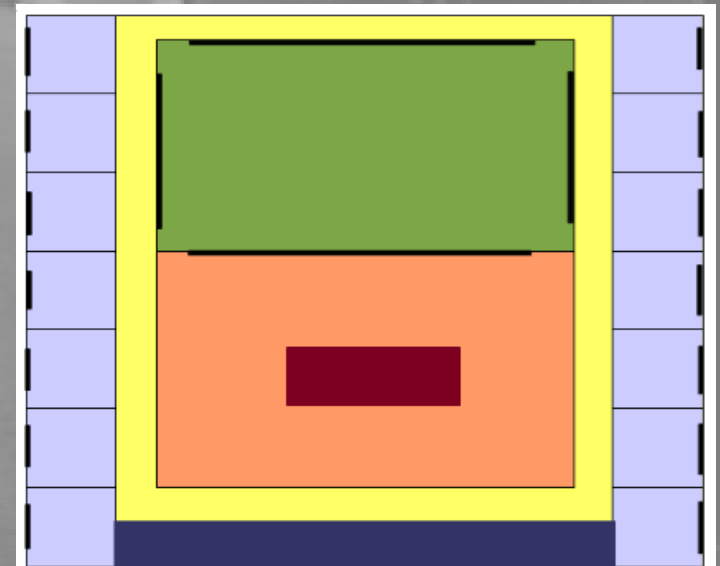
« T »

### Legend

	private spaces
	corridor
	place to live
	kitchen
	garden
	technical areas
	shops
	windows



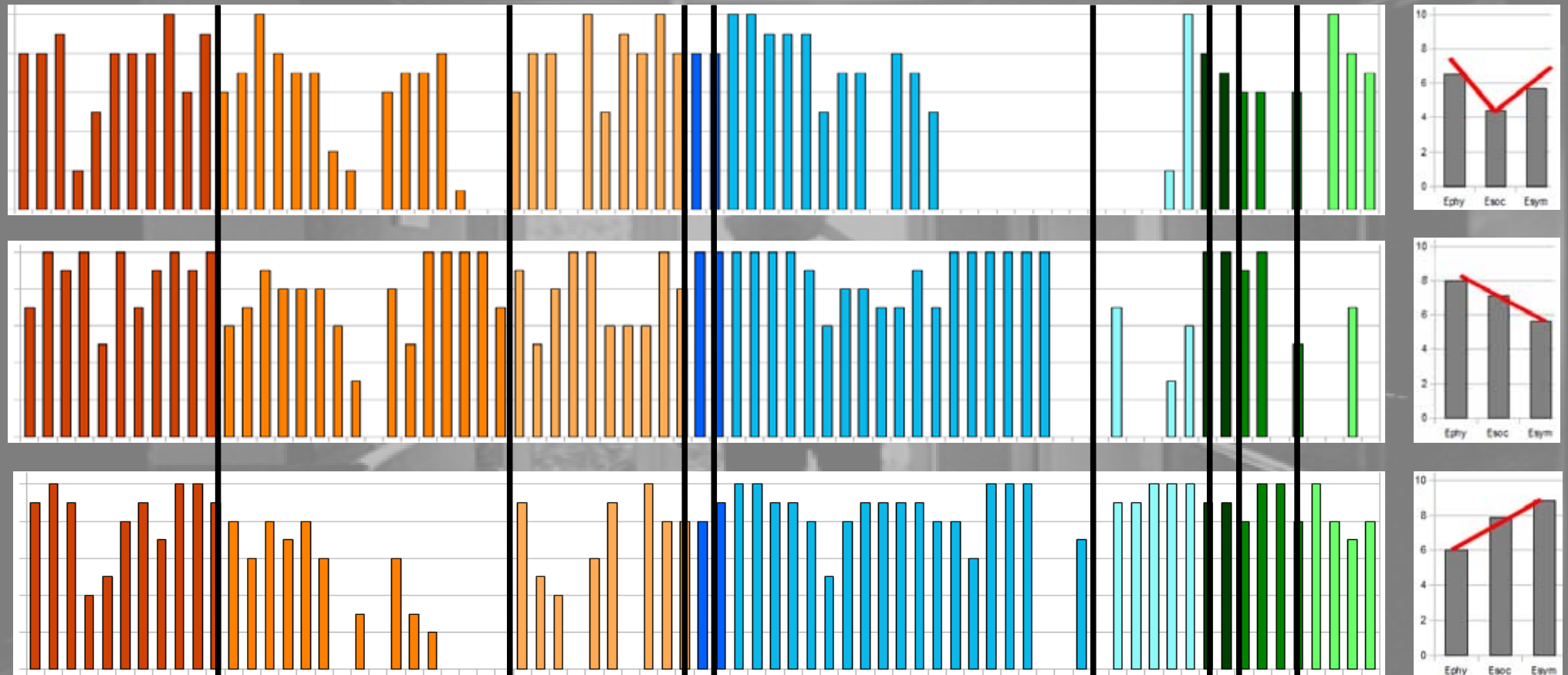
« H »



« O »

# Differentiation of care places at the scale of Alzheimer's specialized units (5)

## ● Results for three examples



### Physical environment

- Clinical efficiency
- Promotion of well-being
- Integration to society

### Social environment

- Clinical efficiency
- Promotion of well-being
- Integration to society

### Symbolic environment

- Clinical efficiency
- Promotion of well-being
- Integration to society

# Prospective simulation

- **Other methods to differentiate and evaluate care places**

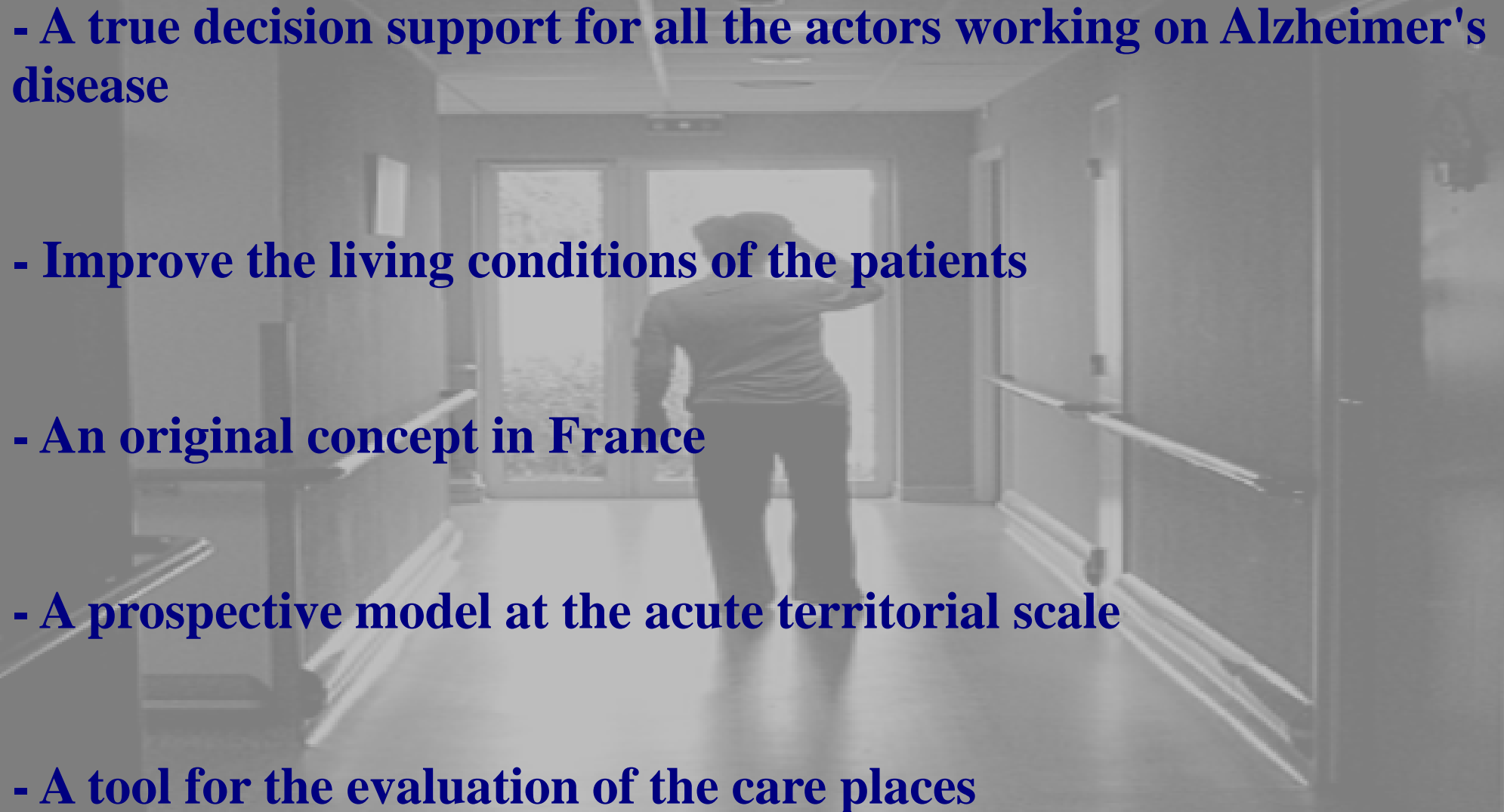
- **Mental maps** (Y. Andre and P. Gould)

- **Photographs** (J. Sperling, J. Decker and G. Rose)

- **International Comparison** (France / U.K.)



## Interests of this study

- A true decision support for all the actors working on Alzheimer's disease
  - Improve the living conditions of the patients
  - An original concept in France
  - A prospective model at the acute territorial scale
  - A tool for the evaluation of the care places
- 



A photograph of a person standing in a hallway, looking out a large window. The person is wearing a dark long-sleeved shirt and dark pants. The hallway has wooden walls and a polished floor. There are handrails on both sides of the hallway. The text "Thank you for your attention" is overlaid in the center of the image in a red, serif font.

**Thank you for your attention**

# En quoi ce sujet est-il géographique ?

- Selon W. Gesler : « Healing and place are inseparable ». Or les lieux ne sont-ils pas des objets éminemment géographiques ?

*De l'analyse spatiale au concept de paysage, en passant par le concept d'human agency*

- Seule l'approche géographique envisage la question dans sa globalité, que ce soit à l'échelle macroscopique ou microscopique.

## Les points forts de South Africa Lodge



Sculptures en grandeur nature  
d'animaux familiers



Mini-golf



Reconstitution d'une plage



Jardin des sens  
(plantes olfactives)



Présence d'animaux et  
visite d'un « PAT dog »



Objets à voler et déplacer



Parcours d'éveil mural



Salle de relaxation et de  
projections  
(elles n'apparaissent pas à l'image)



Chambre personnalisée



« the memory café »

Auteur : Mélanie Petit



## Les points de forts des Jardins d'Élodie



Des déambulations intéressantes



Le terrain de boules et la façade



Le café « réminiscence »



Un des lieux de vie



Une chambre de style colonial



La salle de balnéothérapie

## Photos de La Buissonnière



Une chambre



Couloir de l'unité



Extérieur du bâtiment



Environnement immédiat

Auteur : Mélanie Petit

## Photos de La Boiserie



Lieu de vie



Couloir



Hall d'accueil de  
l'établissement



Extérieur du bâtiment

Auteur : Mélanie Petit